

HYVA HOSE BURST VALVE



HOSE BURST VALVE SAE STEEL

Hyva

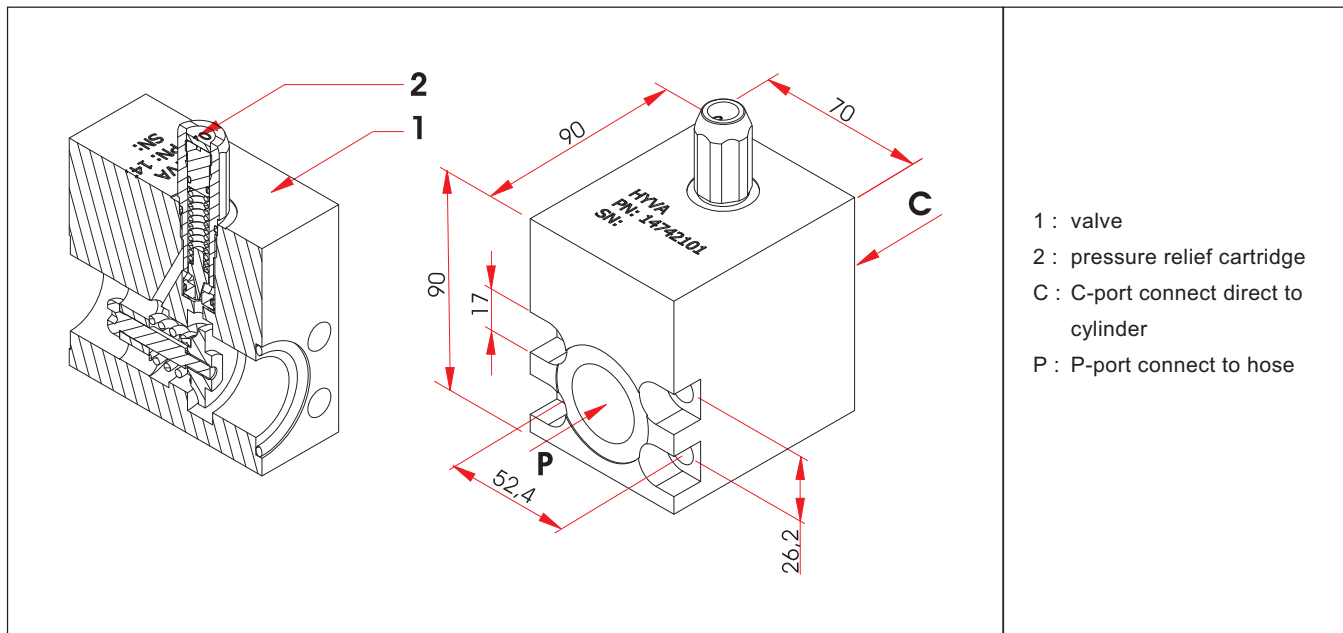
valve type:

hose burst valve 1" SAE

page # 1 / 1

part number:

147 42 101 & 147 42 104



- 1 : valve
- 2 : pressure relief cartridge
- C : C-port connect direct to cylinder
- P : P-port connect to hose

types

Part no.	description	Pressure
147 42 101	hose burst valve 1" SAE	190 bar
147 42 104	hose burst valve 1" SAE	250 bar

spare parts

Part no.	description	Pressure
147 72 190	pressure relief cartridge	190 bar
147 72 250	pressure relief cartridge	250 bar
148 42 209	bonded seal	

specifications

maximum flow	: 215 litre/ minute (at 40 cSt)
minimal operating temperature	: -25 °C
maximum operating temperature	: 80 °C
weight	: 4.0 kg

general information

A hose burst valve is a flow dependent valve that must be mounted direct on the cylinder. The hose burst valve will close as soon as the flow from the cylinder will exceed a set value, for this valve 215 L/min (e.g. this happens when the hose bursts).

In case the valve closes suddenly, an integrated pressure relief valve will shortly open to reduce pressure peaks in the cylinder. After a short period the pressure relief valve will close and the lowering of the cylinder will be stopped. Opening the valve can be done by connecting a new pressure hose between the hose burst valve and the tipping valve. Put the tipping valve in the position tip until the cylinder starts to tip. The hose burst valve is now open again and the cylinder can be lowered.

In case the valve is blocked in full tipped position, the pressure relief valve can be unscrewed by one turn, which will result in opening of the valve.

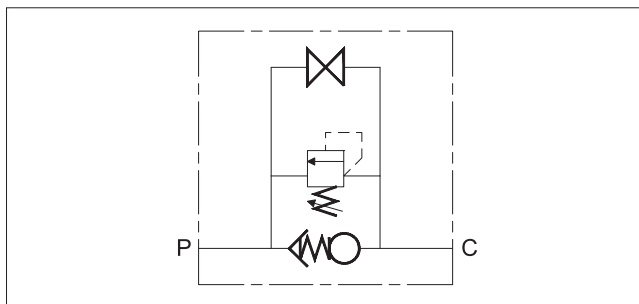
The advantages of mounting a hose burst valve are:

- Secures the driver and the truck from falling load in case of a hose burst.
- Protects the environment against huge oil spoilage in case of a hose burst.

mounting instruction

1. Make sure that the O-ring is present in the groove (C-port) of the valve.
2. Press the Hose burst valve gently (with C-port) on the 1" SAE inlet of the cylinder.
3. Mount the Hose burst valve on the cylinder using the four M10 bolts and Nordlock washers. Torque each bolt with a torque wrench to 40 Nm.
4. Mount the 1" Adapter with a bonded seal on the 1" inlet (P-port) of the Hose burst valve. Torque the adapter to 100 Nm.

hydraulic symbol



extra mounting parts

Part no.	description	qty.
012 26 187	O-ring	1
150 14 261	Bolt HSHC M10x90	4
150 24 085	Washer Nordlock M10 YZP	4

Note

- Lowering with a loaded body might cause the valve to close tipping will reset the valve.
- O-ring is delivered with valve.