

HYVA CYLINDER

714 06 707



type: UMB 169-5-2480-K265-50-3/4"-HC

tipping weight: 21-32 ton

page # 1 / 2

Stage diameters 169 149 129 110 91	front view cylinder		<table border="1"> <tr><td>A</td><td>230</td></tr> <tr><td>ØC</td><td>192</td></tr> <tr><td>G¹</td><td>746</td></tr> <tr><td>I</td><td>481</td></tr> <tr><td>K¹</td><td>265</td></tr> <tr><td>M¹</td><td>106</td></tr> <tr><td>ØP</td><td>110</td></tr> <tr><td>ØQ</td><td>75</td></tr> <tr><td>S</td><td>490</td></tr> <tr><td>ØW</td><td>50</td></tr> <tr><td>X</td><td>45</td></tr> </table>	A	230	ØC	192	G¹	746	I	481	K¹	265	M¹	106	ØP	110	ØQ	75	S	490	ØW	50	X	45
A	230																								
ØC	192																								
G¹	746																								
I	481																								
K¹	265																								
M¹	106																								
ØP	110																								
ØQ	75																								
S	490																								
ØW	50																								
X	45																								

¹including 20 mm pull-out [tol. -5; +30 mm]

²cylinder is delivered including oil inlet swivel adapter and cup

specifications

total stroke ¹	2480 mm
dry weight cylinder only	115 kg
total volume	37.0 L
working volume	34.2 L
maximum pressure	220 bar
maximum pump flow	98 l/min
maximum allowable thrust first stage ³	25.0 ton
oil inlet	3/4" BSP

technical notes

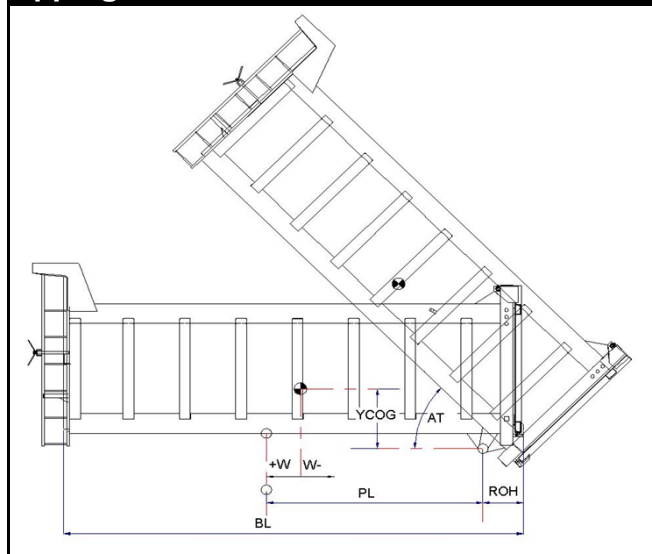
This cylinder is a lifting device only and may not be used as a structural member or be subjected to side load. Sideload and/or poor alignment might result in cylinder leakage. Hyva therefore strongly recommends the use of a cradle, even in instances where the cylinder only tips to the rear or to the side. The cylinder is painted black RAL9005.

For suitable hydraulic oils, please refer to data sheet OIL-0011. For details of available brackets and cradles, please refer data sheet 015BRA06.

Detailed calculations can be made using the HYVA Tipper Program, freely available from tipper.hyva.com.

³The cylinder thrust on the first stage (from the HYVA Tipper Program) must not exceed the maximum allowable (see specifications above).

tipping view



tipping weight

PL	3230			mm	2860		
YCOG	700			mm	700		
ROH	700			mm	700		
BL	7860	7150	6550	mm	7120	6470	5930
CYL w.r.t. COG (W)	0	360	660	mm	0	320	590
	Tipping weight for full stroke of 46°				Tipping weight for full stroke of 52°		
Tipping weight	21	24	27	ton	23	26	30
	Tipping weight for second last stage, up to 37°				Tipping weight for 2nd last stage, up to 42°		
Tipping weight	25	28	31	ton	25	28	32

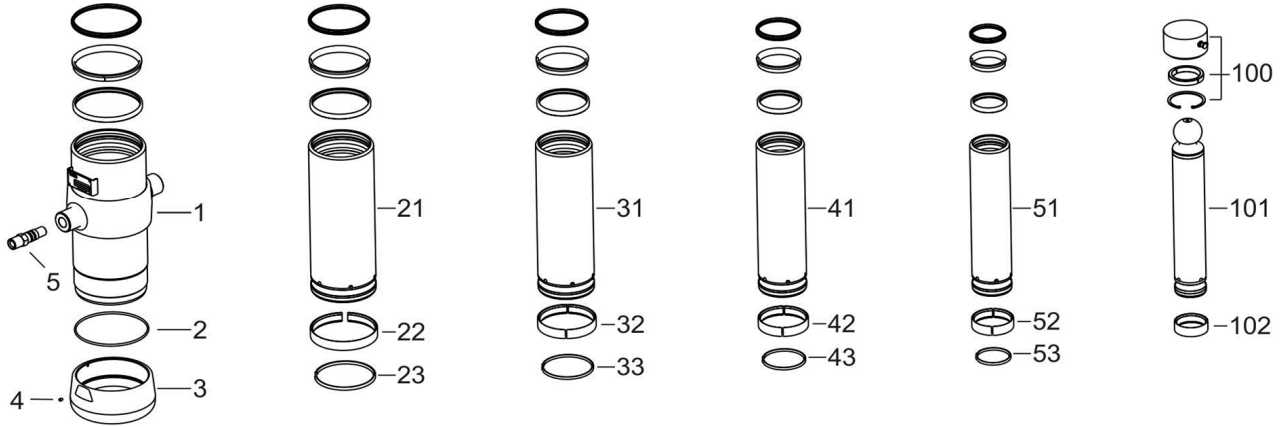
HYVA CYLINDER

714 06 707

type

UMB 169-5-2480-K265-50-3/4"-HC

page # 2 / 2



Spare part list

Pos	Part no.	Description	Qty.
1	73507750	BASE 191-0612-N0159	1
2	01226780	O-RING 184 X 4 70 SHORE	1
3	73101050	THREADED BOTTOM UM 191	1
4	01792571	LOCKING SCREW M6X12 INT. HEX. DIN 916	1
5	73103002	OIL INLET ADAPTOR UM 3/4"OT+O-RING	1
21	73606751	STAGE 169-0612-HC	1
22	71807169 K	SLIDER FL 169	1
23	71813169 K	LIFTRING FL 169x5	1
31	73605751	STAGE 149-0612-HC	1
32	71807149 K	SLIDER FL 149	1
33	71812149 K	LIFTRING FL 149/HP 150	1
41	73604751	STAGE 129-0612-HC	1
42	71807129 K	SLIDER FL 129/GF 129 (2 X 1/2)	1
43	71812129 K	LIFTRING FL 129/HP 129	1
51	73603751	STAGE 110-0612-HC	1
52	71807110 K	SLIDER FL 110/GF 110 (2 X 1/2)	1
53	71812110 K	LIFTRING FL 110	1

Spare part list

Pos	Part no.	Description	Qty.
100	01745103	RETAINER KIT UMB D.75	1
101	73402751	PISTON B 091-0654-HC	1
102	71807091 K	SLIDER FL 091 (2 X 1/2)	1

Seal kit complete

Part no.	Description
719 04 651K	Complete packset: Consists of all packsets with packset grease and o-ring.